



Fletcher Road, London, W4 5AY

Asking Price £599,950

WHITMAN & CO.

SALES · LETTINGS · COMMERCIAL

- Two double bedrooms
- 15' reception room
- 178 year lease

- Luxury bathroom
- Fully integrated kitchen
- Private front door

Tenure - Leasehold
 Lease length - 178 years remaining
 Ground rent - peppercorn
 Service charge - £300 pa
 Local Authority - Ealing
 Council Tax - Band G

THE PROPERTY

An immaculately presented two double bedroom period flat with private south facing patio garden in this sought after residential street close to numerous amenities.

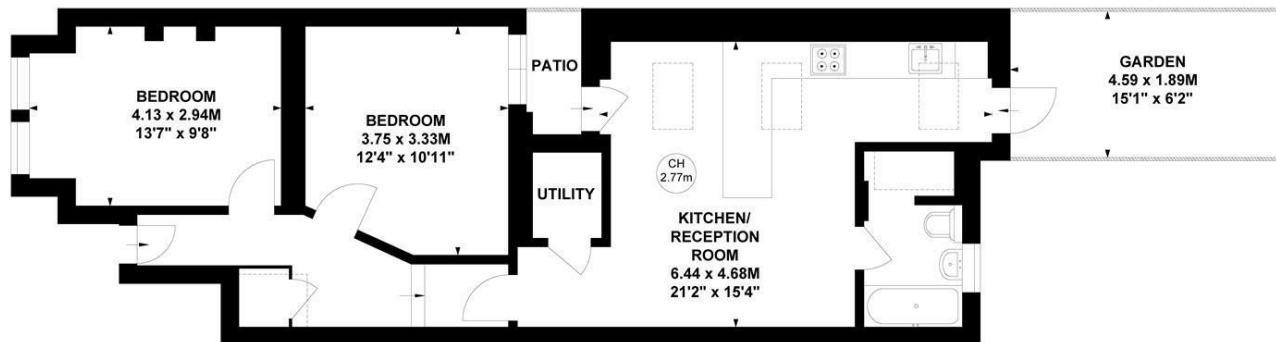
The property includes two double bedrooms, a luxury bathroom, a 15' reception room, a fully integrated kitchen, with exceptional natural light, a 178 year lease, and a private front door.

Situated in this tree-lined residential street offering close proximity to rail, tube and bus networks as well as the extensive range of shops, bars and restaurants on Chiswick High Road.

Fletcher Road, W4

Approximate gross internal area
65.52 sq m / 705 sq ft

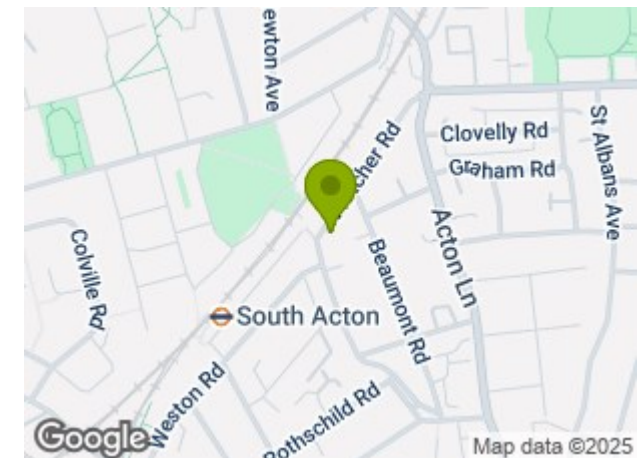
Key :
 CH - Ceiling Height



Ground Floor

Not to scale, for guidance only and must not be relied upon as a statement of fact.
 All measurements and areas are approximate only

SITUATION



5-7 Turnham Green Terrace, Chiswick, London, W4 1RG

Tel 020 8747 8800

E-mail sales@whitmanandco.com

Website www.whitmanandco.com

